



# KINGDOM

CHRISTIAN ACADEMY

## Mark Your Calendar

**Monday, April 13th**

- 4th Quarter Mid-Term

**Tuesday, April 14th**

- Chapel with Guest Speaker Pastor Ron Hess
- **Spring Picture Day!**
- **Last day for \$10,000 Donation Match!**

**Tuesday, April 21st**

- **Volunteer Appreciation Chapel** with Guest Speaker Micah Spurling
- **Pizza and Pie Pickup, 4pm**

**Wednesday, May 13th**

- **Preschool Promotion**
- **Kindergarten Promotion**

**Thursday, May 14th**

- **Chapel & Field Day**
- **End of 4th Quarter**
- **Last Day of School, Half Day - Dismiss at noon**

**HOT LUNCH**

**Wednesday, April 15**

**TACO BELL**

## The Weekly Update

April 9, 2026

# Let's Get This Built!



## Our Goal For Completion: Summer 2026!

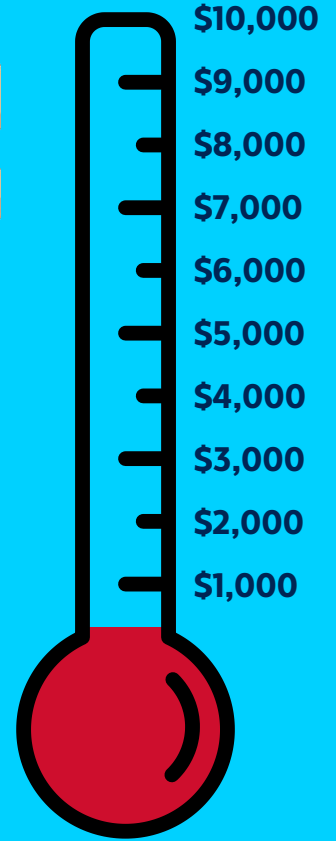
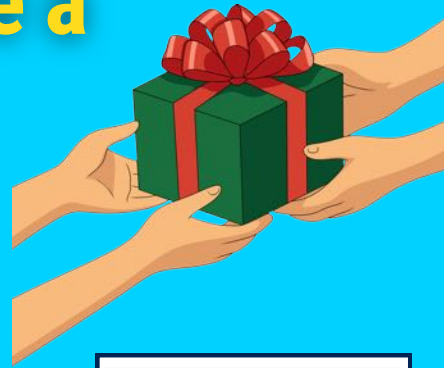
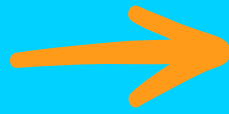
Please consider how your investment can make a big impact



# Your giving can have a Double Impact!

A generous benefactor has pledged **up to \$10,000** in matching funds for all donations made to KCA by April 14, 2026!

Click or scan the QR Code to donate now.



Cash or check donations can also be made at our office, or mailed to PO Box 6166, Fulton, MO 65251.

## Pray for KCA



### KCA - Gentle Heart

1 Peter 3:4

but let it be the hidden person of the heart, with the imperishable quality of a gentle and quiet spirit, which is precious in the sight of God.

### Attribute of God - Forgiving Psalm 86:5

You, Lord, are forgiving and good, abounding in love to all who call to you.

### Fruit of the Spirit - Gentleness Matthew 11:29

Take my yoke upon you and learn from me, for I am gentle and humble in heart, and you will find rest for your souls.

### Students - Be Gentle Titus 3:2

To speak evil of no man, to be no brawlers, but gentle, shewing all meekness unto all men.

Kingdom Christian Academy's mission is to **glorify God** through a unique community where Christ-centered **love and discipline** are present and students flourish as they **learn, grow, and serve**.



# PICTURE DAY IS COMING!

Let your student's personality  
take center stage with

*Spring Personality Picture Day!*



All Students will be photographed.

Kingdom Christian Academy

**Spring Picture Day is:**

**Tuesday, April 14, 2026**

**WagnerPortraitGroup.com**

**Online Pre-Order Password: 6D6S6Q3R**



**Pre-Order Before Picture Day!**

**Every pre-order receives a free gift!**



**YOUR PURCHASE HAS *purpose!***

Your order helps us provide your school  
with valuable resources and support.

Need help ordering? We're here for you! 314-567-5900 | [WagnerPortraitGroup.com](http://WagnerPortraitGroup.com)



# 2026-2027 Academic Calendar

July 2026						
S	M	T	W	T	F	S
			1	2	3	4
5	6	7	8	9	10	11
12	13	14	15	16	17	18
19	20	21	22	23	24	25
26	27	28	29	30	31	

### Recurring School Events

- School Board Meeting - Every 3rd. Tuesday of the month at 6:30 PM
- Chapel - Most Tuesdays at 8:10 AM (no Chapel on weeks with Monday holidays)

January 2026						
S	M	T	W	T	F	S
					1	2
3	4	5	6	7	8	9
10	11	12	13	14	15	16
17	18	19	20	21	22	23
24	25	26	27	28	29	30
31						

- 4 No School - Professional Development
- 5 Beginning of 3rd. Quarter
- 18 No School - MLK, Jr Day

August 2026						
S	M	T	W	T	F	S
						1
2	3	4	5	6	7	8
9	10	11	12	13	14	15
16	17	18	19	20	21	22
23	24	25	26	27	28	29
30	31					

- 10-13 Staff Week
- 13 Orientation Night
- 18 First Day of School  
Beginning of 1st. Quarter

February 2026						
S	M	T	W	T	F	S
	1	2	3	4	5	6
7	8	9	10	11	12	13
14	15	16	17	18	19	20
21	22	23	24	25	26	27
28						

- 2 3rd. Quarter Mid-Term
- 15 No School - President's Day

September 2026						
S	M	T	W	T	F	S
		1	2	3	4	5
6	7	8	9	10	11	12
13	14	15	16	17	18	19
20	21	22	23	24	25	26
27	28	29	30			

- 7 No School - Labor Day
- 16 1st. Quarter Mid-Term

March 2026						
S	M	T	W	T	F	S
	1	2	3	4	5	6
7	8	9	10	11	12	13
14	15	16	17	18	19	20
21	22	23	24	25	26	27
28	29	30	31			

- 4 No School - Professional Development
- 10 End of 3rd. Quarter
- 11 Beginning of 4th. Quarter
- 22-25 Standardized Testing Week
- 29-31 No School - Spring Break

October 2026						
S	M	T	W	T	F	S
				1	2	3
4	5	6	7	8	9	10
11	12	13	14	15	16	17
18	19	20	21	22	23	24
25	26	27	28	29	30	31

- 1 Half Day - Dismiss at Noon  
Parent Teacher Conferences 1 p.m. to 5 p.m.  
End of 1st. Quarter
- 14 Beginning of 2nd. Quarter
- 15 No School - Professional Development
- 29

April 2026						
S	M	T	W	T	F	S
				1	2	3
4	5	6	7	8	9	10
11	12	13	14	15	16	17
18	19	20	21	22	23	24
25	26	27	28	29	30	

- 1 No School - Spring Break
- 19 4th. Quarter Mid-Term

November 2026						
S	M	T	W	T	F	S
1	2	3	4	5	6	7
8	9	10	11	12	13	14
15	16	17	18	19	20	21
22	23	24	25	26	27	28
29	30					

- 11 2nd. Quarter Mid-Term
- 23-26 No School - Thanksgiving Break

May 2026						
S	M	T	W	T	F	S
						1
2	3	4	5	6	7	8
9	10	11	12	13	14	15
16	17	18	19	20	21	22
23	24	25	26	27	28	29
30	31					

- 18 Preschool Last Day of School
- 19 Preschool Promotion  
Kindergarten Promotion
- 20 Chapel / Field Day  
Half Day - Dismiss at noon
- End of 4th. Quarter, Last Day of School
- 22 8th. Grade Graduation

December 2026						
S	M	T	W	T	F	S
		1	2	3	4	5
6	7	8	9	10	11	12
13	14	15	16	17	18	19
20	21	22	23	24	25	26
27	28	29	30	31		

- 17 End of 2nd. Quarter
- 21-31 No School - Christmas Break

June 2026						
S	M	T	W	T	F	S
		1	2	3	4	5
6	7	8	9	10	11	12
13	14	15	16	17	18	19
20	21	22	23	24	25	26
27	28	29	30			

- Snow Make-Up Days**  
Should we exceed 5 snow days, we will make up school on:
- 1. January 22
- 2. February 19
- 3. March 12
- 4. April 9

	First Day of Quarter		End of Quarter
	Mid-Term		No School
	Half Day - Dismiss at noon		Staff PD or Work Day

\* Teacher PD = Teacher Professional Development